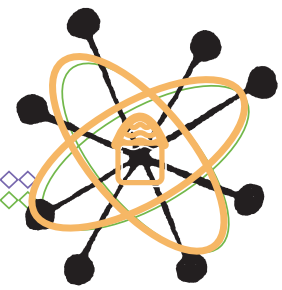




Home Safety Checklist



Use this checklist to identify possible safety problems in your home. As you go from room to room, place a mark in the appropriate box. Go back over your checklist and identify three things you can do to make your home safer. List those three things in the bottom section of this checklist. Take action and make your home safer for you and your family.

 Stairways & Porches	Yes	No	Does Not Apply
Are the stairs well lighted?			
Do all indoor stairways have light switches at the top and bottom?			
Are there sturdy handrails for all steps and stairways?			
Are the steps and stairs in good condition?			
Are there sturdy guard rails on all porches and decks?			
Are porch area(s) in good condition?			
Are the stairways a non-slippery surface?			
 Living Room & Family Areas	Yes	No	Does Not Apply
Are the floors a non-slippery surface?			
Do all throw rugs have non-skid backing?			
Are carpets firmly attached to the floor?			
Is the furniture in good repair and safe to use?			
Are the traffic areas free from all cords (electrical, cable, etc.)?			
Are hallways free from clutter?			
Are hallways well lighted?			
Does the room have lighting that doesn't produce glare?			
Is there a screen in front of the fireplace?			
Are electric/gas space heaters at least 3 feet away from curtains, furniture, and other combustible objects?			
Are electric/gas space heaters placed on non-flammable surfaces and out of traffic paths?			
Are electric and gas space heaters placed where they can't easily fall over?			
Are gas space heaters properly vented?			



Kitchen Area

Yes

No

Does Not Apply

Are traffic areas free from all cords? (extension, phone)

Is there good lighting in the work areas? (sink, stove)

Are frequently used items stored in/on an "easy to reach" place?

Is a step stool or small ladder used to reach high shelves?

Are the floors of a non-slick surface?

Do all throw rugs have a non-skid backing?

Are cleaners/insecticides stored away from food?

Are cleaners/insecticides stored out of children's or pets reach?

Are spills wiped up as soon as they occur or are noticed?

Are towel racks located away from the stove/oven?

Are cooking areas free of grease or extensive mess and clutter?

Are grease containers kept away from stove in the refrigerator?

Is there a GFIC or ground fault circuit interrupter? This is an outlet designed to protect against severe electrical shock.



Bathroom Areas

Yes

No

Does Not Apply

Are exposed hot water and drain pipes covered?

Is the bathroom free of clutter so you can move around easily?

Can the temperature of the bathroom space be adjusted?

Is the bathroom free of portable electric or gas space heaters?

Does the toilet have some type of sturdy support nearby (not a towel bar)?

Is the bathroom well lighted?

Are all the tubs/showers equipped with non-slippery surfaces?

Do all tubs/showers have adequate grab bars or sturdy support (not a towel bar)?

Are medicines clearly labeled?

Are medicines kept out of reach of children?

Are expired medicines thrown away?

Are nightlights in the bathroom?

Are hairdryers and other electrical equipment used away from water?

Are razor blades stored and disposed of properly?

Do throw rugs on the floor have non-skid backing?

Are cleaning fluids stored out of reach of children or pets?

Are traffic areas free from all cords?

Is there a GFIC or grounded outlet?



Bedroom Areas

	Yes	No	Does Not Apply
Is a lamp/light switch within reach as you walk into the room?			
Is a lamp or light switch within reach of the bed?			
Is a night light in the room?			
Is a flashlight located next to the bed?			
Is a telephone located next to the bed?			
Are magazines and newspapers kept off the floor?			
Do throw rugs have non-skid backing?			
Is the bed sturdy?			
Is the bed a good height?			
Does the bed have an easy to grip head board?			
Are traffic areas free from all cords (electrical, cable, etc.)?			
Are electric blankets and heating pads in good condition?			



Other Areas

	Yes	No	Does Not Apply
Is the water temperature safe (120°F)?			
Is there sufficient light in every room?			
Are power cords and/or extension cords in good condition?			
Are locks present and secured on all windows?			
Windows are operable and not painted or nailed shut?			
Are doors operable and not blocked off?			
Are all electrical outlets used properly? (not overloaded)			



Outdoor Areas

	Yes	No	Does Not Apply
Is there lighting along walkways and by doors?			
Are walkways in good condition?			
Are driveways in good condition?			
Is the yard clear of debris such as glass, trash or boards?			
Is lawn mowed and landscaping maintained?			



Emergency Issues

	Yes	No	Does Not Apply
Is there a fire extinguisher present in the home?			
Is the fire extinguisher's inspection up-to-date?			
Are smoke detectors in the home?			
Is there a carbon monoxide (CO) detector in the home?			
Are emergency telephone numbers displayed by the phone?			

3 Ways I am Going to Make My Home Safer

	Date Completed
1)	
2)	
3)	

Remember, Safety Begins At Home!

Janet Valente, Ed.D.

FACS Program Development Specialist

Pamela R. Turner, Ph.D.

Assistant Professor and Extension Housing Specialist

Reviewers:

Sarah Kirby, Ph.D.; North Carolina State University

Mary Lou Vergara, MSW, M.Div.; Atlanta Area Agency on Aging

Anne Sweaney, Ph.D.; University of Georgia

HACE-E-79-6

December 2009

The University of Georgia and Ft. Valley State University, the U.S. Department of Agriculture and counties of the state cooperating. Cooperative Extension, the University of Georgia Colleges of Agricultural and Environmental Sciences and Family and Consumer Sciences, offers educational programs, assistance and materials to all people without regard to race, color, national origin, age, gender or disability.

An Equal Opportunity Employer/Affirmative Action Organization | Committed to a Diverse Work Force



THE UNIVERSITY OF GEORGIA
COOPERATIVE EXTENSION

Colleges of Agricultural and Environmental Sciences & Family and Consumer Sciences