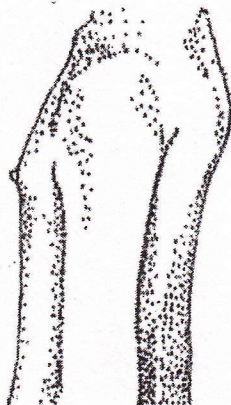


SEXUAL MATURATION QUESTIONNAIRE (GIRLS)

Subject ID#: _____

Date: _____

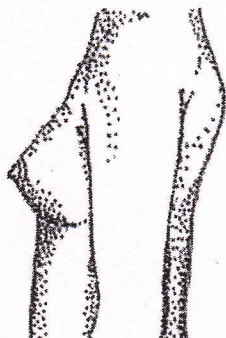
We need to find out what stage of sexual development you are in. Please look at the pictures and circle the one that looks most like you now.



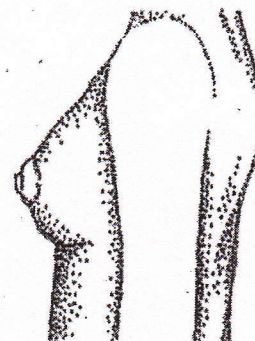
Stage 1: Elevation of papilla only.



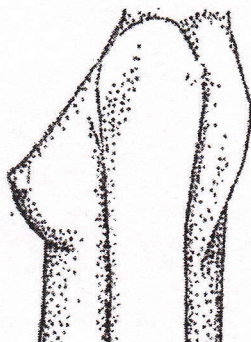
Stage 2: Elevation of breast and papilla as small mound, areola diameter enlarged.



Stage 3: Further enlargement without separation of breast and areola.



Stage 4: Secondary mound of areola and papilla above the breast.



Stage 5: Recession of areola to contour of breast.