



Caelan McKenzie

TXMI 3390

SUSTAINABLE DESIGN

CONCEPT STATEMENT

This English Country inspired two-story home will not only be a beautiful space for the Palmers, but it will also be a sustainable refuge. It will remain energy efficient through the use of energy star rated appliances, low-e windows, solar panels, LED light fixtures, and cross ventilation. The reclaimed wood, recycled metal, terrazzo, strandwoven bamboo, and timbercrete are just some examples of materials that keep this home sustainable. A whole-home fan will keep the attic ventilated and keep the air from overworking to cool the house. Dual flush toilets will save gallons of water each year.

The whole-home air purifier will keep the indoor air quality clean enough for Lisa, their eight-year-old daughter who has asthma. No VOC paint will help steer away from toxins that could disrupt her immune system as well.

Light colored walls keep natural light reflecting throughout the home so that lights do not have to be used during the day. Walls of windows on each side of the home allow cross ventilation to cool the home in the summer as well as light in the winter to warm the home. This light and bright design is offset by reclaimed wood to keep the atmosphere warm. Art, wainscoting, and warm finishes such as brass add texture to make the space relaxing and inviting.



MOOD BOARD





SITE PLAN

1473-1447 Watson Springs Rd, Watkinsville, GA 30677



SUSTAINABILITY

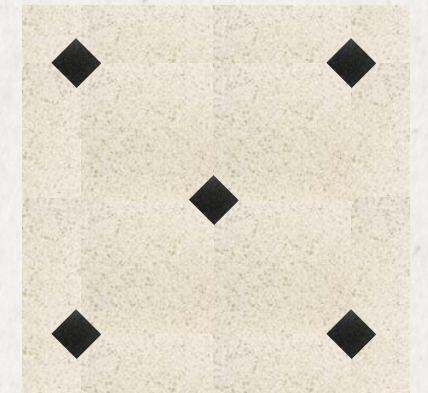
- Low-e windows
- Cross ventilation
- Fan to circulate air in the home
- Solar panels
- Strandwoven bamboo flooring
- Water-saving dual flush toilets
- Low/no VOC paint
- Light reflecting walls
- Open floorplan for light
- Numerous windows and skylights for light
- LED lighting
- Energy Star appliances
- Reclaimed cedar shake
- Reclaimed beams
- Air purifier
- Terrazzo shower tiles
- Rammed earth painted white
- Timbercrete stone
- Local & reclaimed furniture



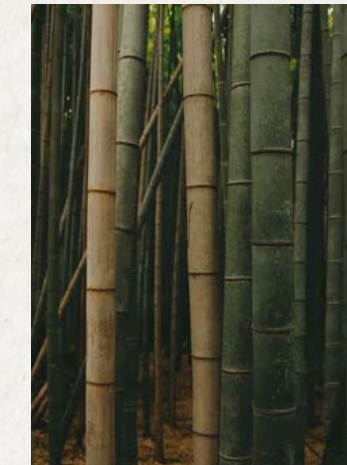
< Air Purifier: Fresh Air
EcoBox by OxyGi



House fan ^



Terrazzo Tile ^



Bamboo ^



Dual flush toilet by Kohler



Timbercrete stone



MAIN LEVEL COLORED
FLOOR PLAN





UPPER LEVEL
COLORED
FLOOR PLAN

LIVING ROOM



Rug made from recycled plastic



Reclaimed wood coffee & side tables

SW 7008
Alabaster
Interior / Exterior
Location Number: 255-C2



Reclaimed wood tv stand

STRANDWOVEN™ BAMBOO



Woven straw and wood console table



Energy
Star rated
range



Energy Star
rated
refrigerator



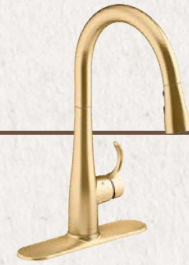
Energy
Star rated
range
hood
insert



Bamboo
range hood



Energy Star
rated
dishwasher



Kohler
motion
sensor
faucet
saves
water



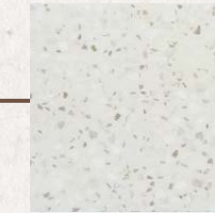
Door
hardware



Light
cabinets
keep the
space bright
with less
lights on



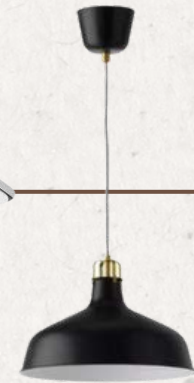
A dark
island
provides
contrast,
anchoring
the space



White
finished
terrazzo
countertop
reflects
light



Multi-
functional
sink by
Kohler



LED
pendant
lights



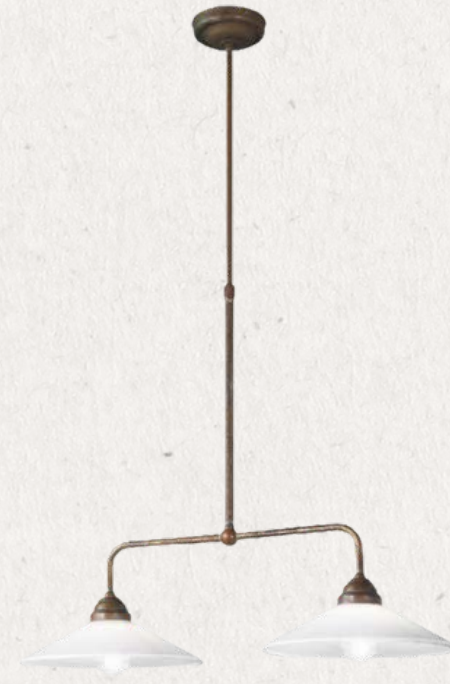
Bar stools
made from
recycled
metal



KITCHEN



Two-lamp
chandelier
with glass
shades cuts
down
electricity
while
allowing the
light to fill
the space



Bamboo
chairs



Reclaimed
wood table

DINING





SW 7008
Alabaster
Interior / Exterior
Location Number: 255-C2



Woven
straw and
wood
dresser



Reclaimed
wood tv stand



MASTER BEDROOM



MASTER BATHROOM



SW 7008
Alabaster
Interior / Exterior
Location Number: 255-C2

Concrete
countertops



Freestanding
bathtub by
Kohler



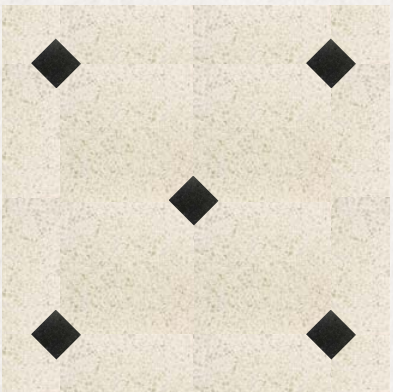
.5 gpm
faucet by
Kohler



Undermount
sink by Kohler



Reclaimed wood
vanity + brass
hardware



Glazed terrazzo shower tiles



Dual flush toilet
by Kohler

Shower trim
kit by Kohler



Bath tub filler
by Kohler



BOY'S ROOM



GIRL'S ROOM

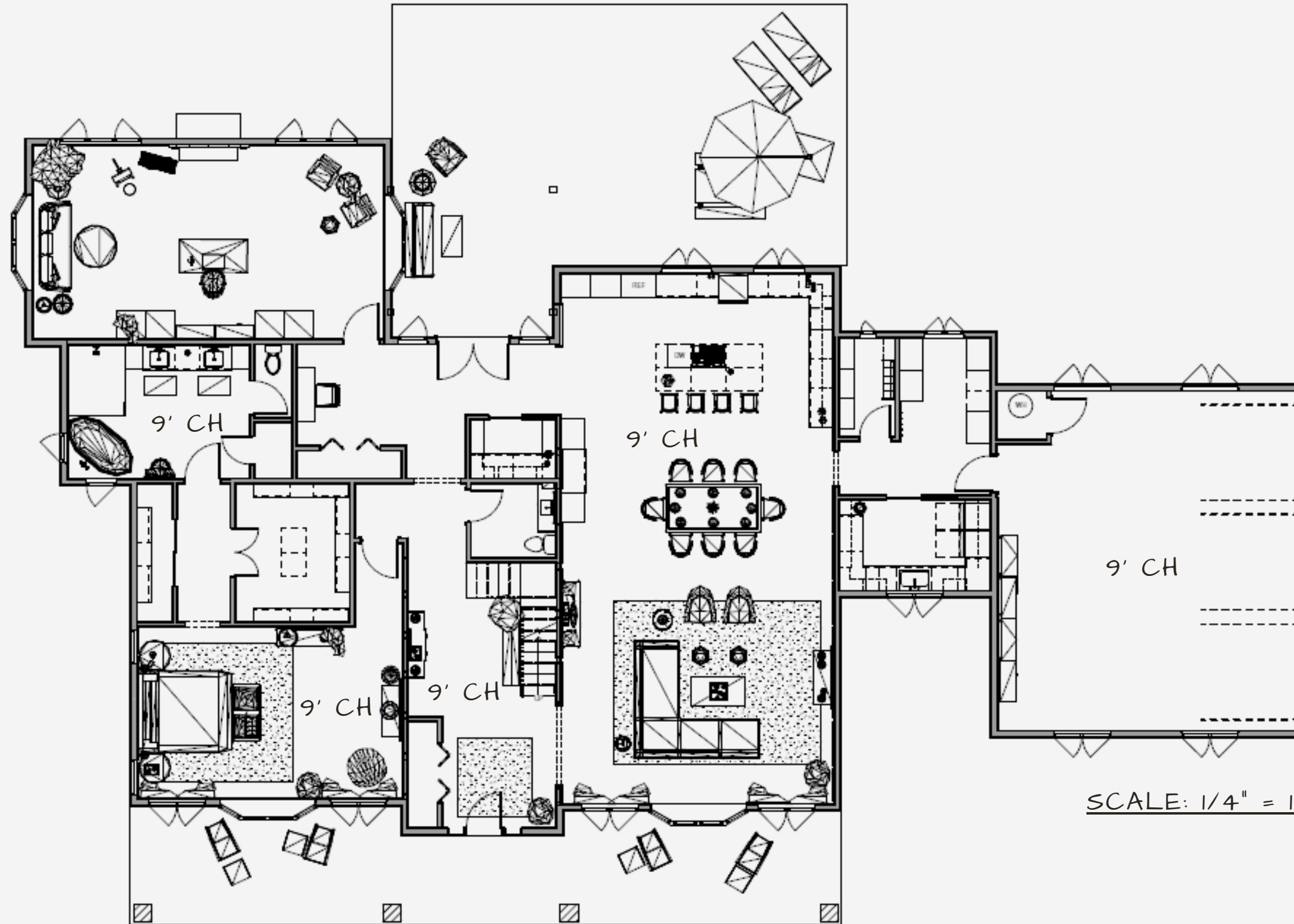


ART STUDIO

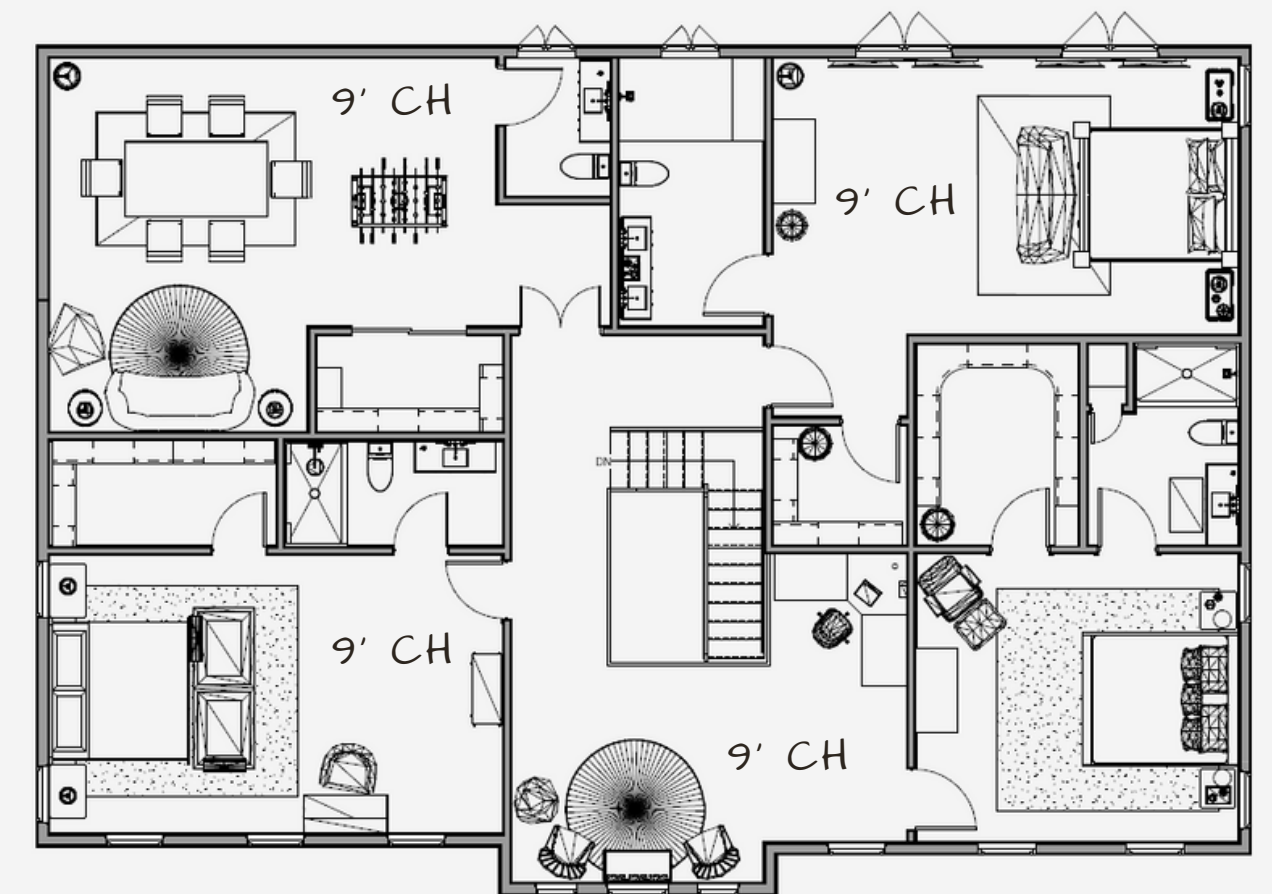


PATIO & FRONT PORCH





MAIN LEVEL



UPPER LEVEL

MAIN + UPPER FLOOR PLANS



THANK YOU!