



MCKAY SEIGLE

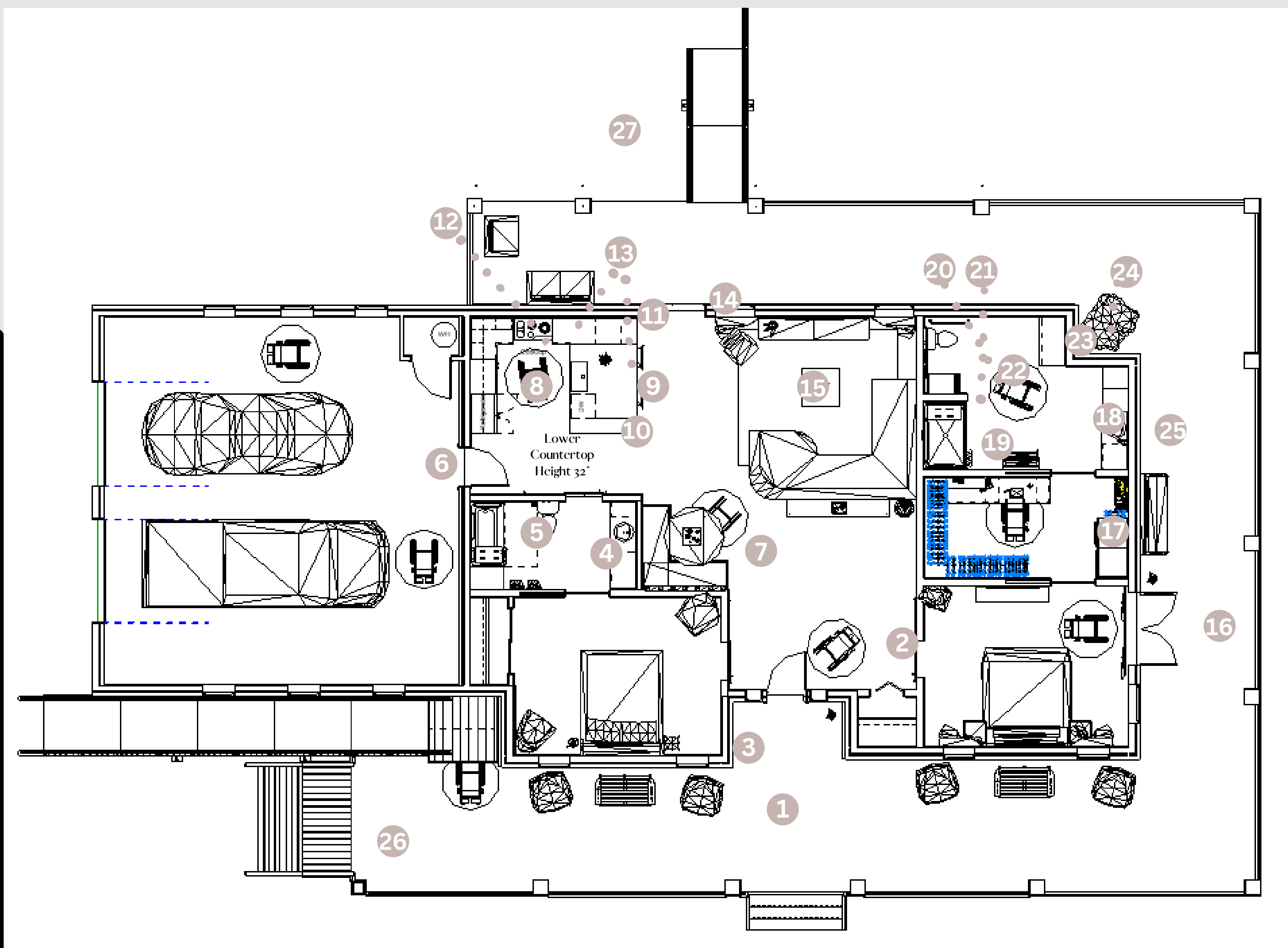
UNIVERSAL DESIGN
PROJECT

HILL RESIDENCE



On February 20th, Ms. Louise Hill woke up unable to move her lower body. Since then, she has been fighting obstacles due to her limited mobility. The concept of this house design is ‘efficient living,’ so that Louise is no longer stopped. Inspired by her physical limitations, this design believes that navigating your home should be both easy and enjoyable. With the standards of the American Disabilities Act in mind, as well as notes from Louise’s requests. This house has plenty of intentional space for navigating all areas of her home. Contrasting finishes have been strategically placed to limit the appearance of the amount of empty space necessary to fulfill a disabled person’s wants and needs. This home can be easily navigated by both manual and electric wheelchairs. This home includes lowered countertops throughout the kitchen and bathrooms; as well as a small regular height counter section for guests in the kitchen. This raised counter provides a space for guests to help out without limiting your personal space. Additionally, the laundry room is included within the master closet. This limits laundry transport throughout the home. A LED vanity and plenty of storage is also in the master closet so getting ready can be done in one single place. Some safety features include grab bars in the bathrooms, a roll-up dining table, non-slip tile flooring, roll under sinks, a side door oven, and many other universally designed components to simplify daily life. Though Louise is an extremely strong woman, limitations are inevitable. Fortunately, this universally designed home limits those limitations.

UNIVERSALLY DESIGNED ADDITIONS

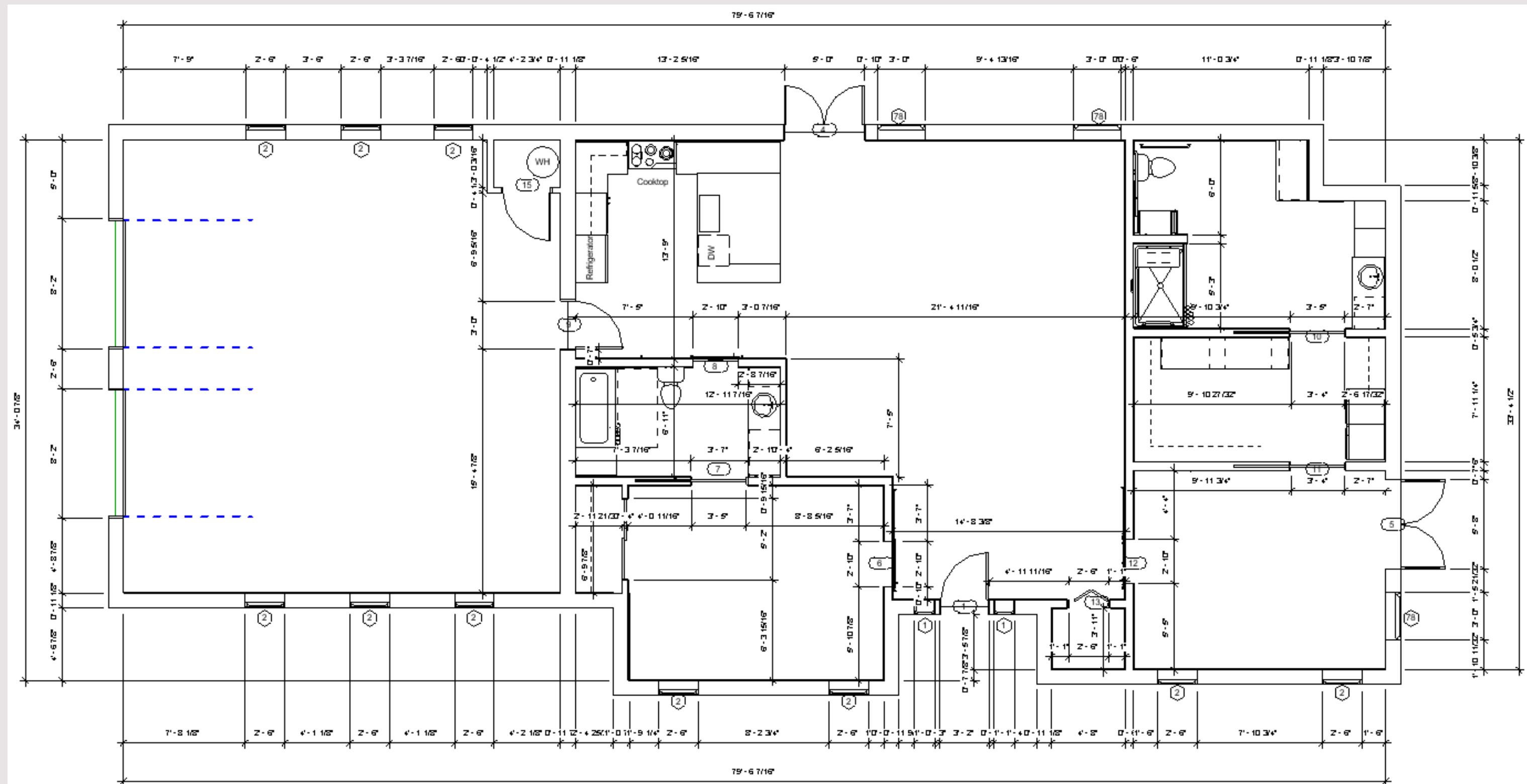


1. Zero threshold door entrance
2. Large area to greet guests
3. Sliding barn doors
4. Non-slip bathroom tile
5. ADA approved tub/shower with bench and grab bars
6. Enclosed garage for inclement weather
7. Dining table with roll under accessibility
8. Double door tall cabinet pantry storage
9. Double sided island for maximum storage
10. Dual height countertops (34" lowest 36" highest for bar)
11. Floating shelves for display easy access
12. Side opening wheelchair height oven and microwave
13. Roll under kitchen workstation sink and range
14. Zero threshold exit to back patio with doggy door
15. Non slip padding under thin living rug
16. Zero-threshold bedroom exit to porch
17. Office/Vanity/Laundry in one convenient location
18. Non-slip patterned tile for dirt blending
19. Roll-in shower with bench and grab bars
20. Removeable hand held shower head with extra pressure
21. Extra long shower curtain to limit water leakage
22. Cart on wheels for necessary medical/toiletries
23. Extra storage for medical needs
24. TV for bathroom entertainment
25. Roll under bathroom sink
26. Entry ramp and stairs
27. Back patio for Charlie with easy rolling capabilities for walking



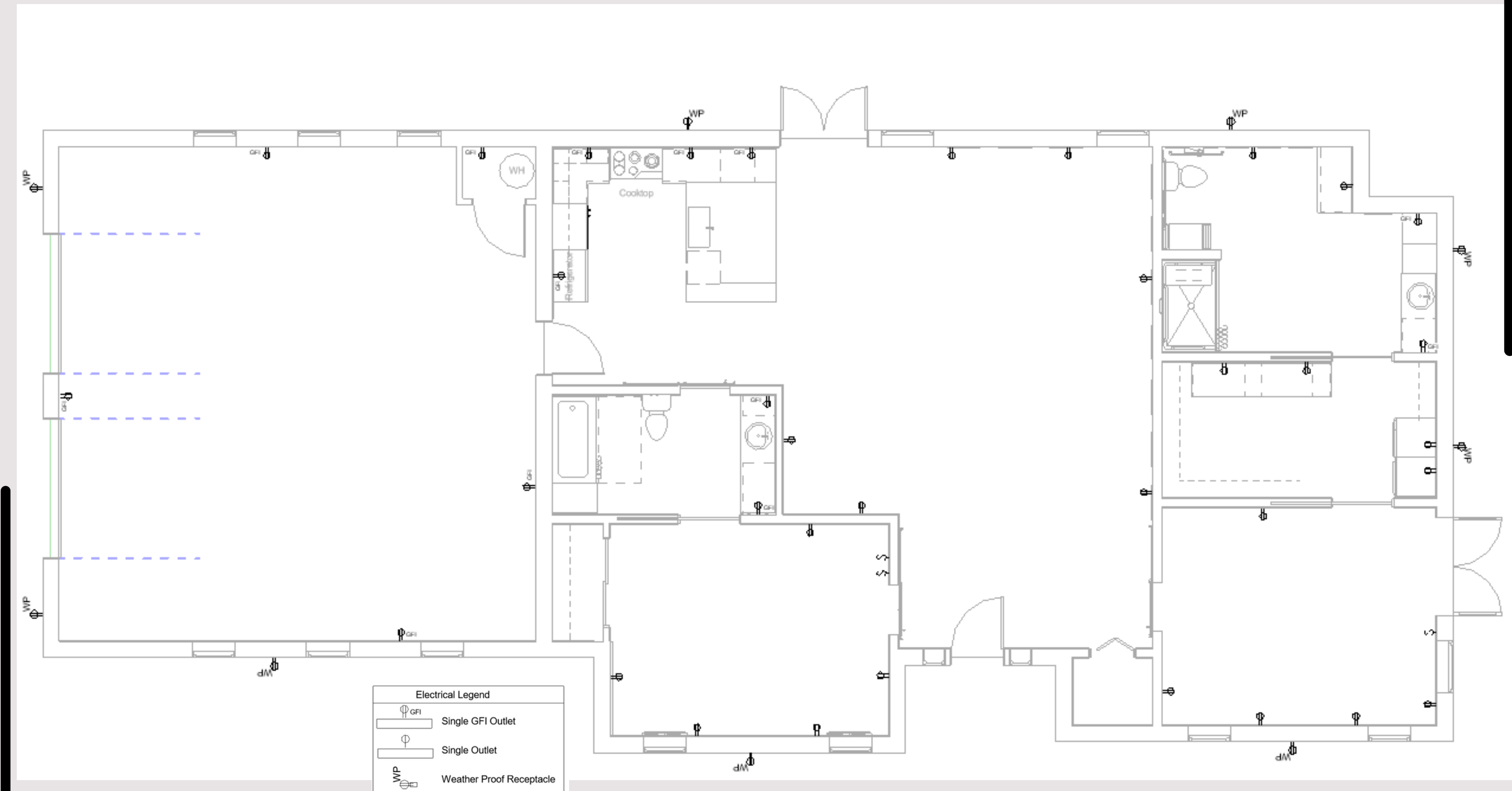


DIMENSIONED FLOOR PLAN



1 First Floor Dimension Plan
1/4" = 1'-0"

ELECTRICAL PLAN



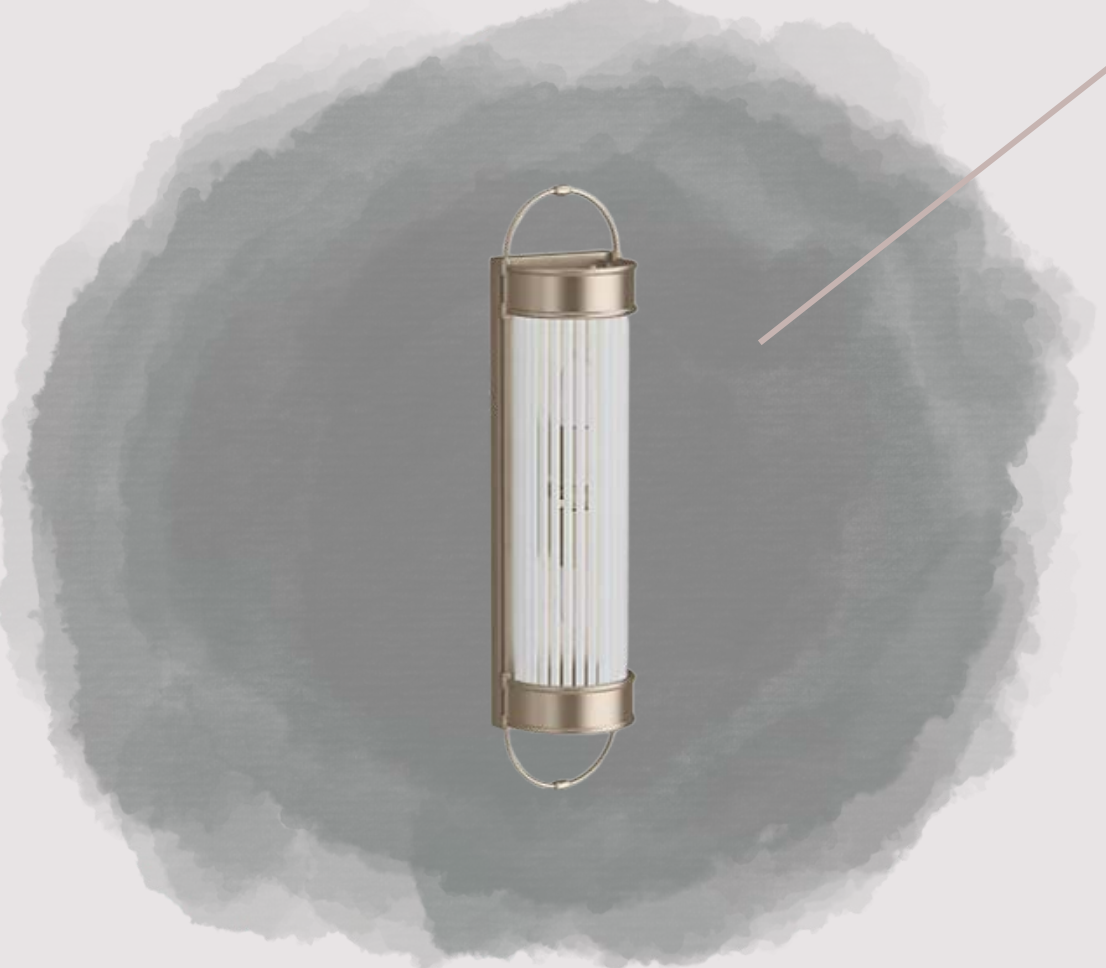
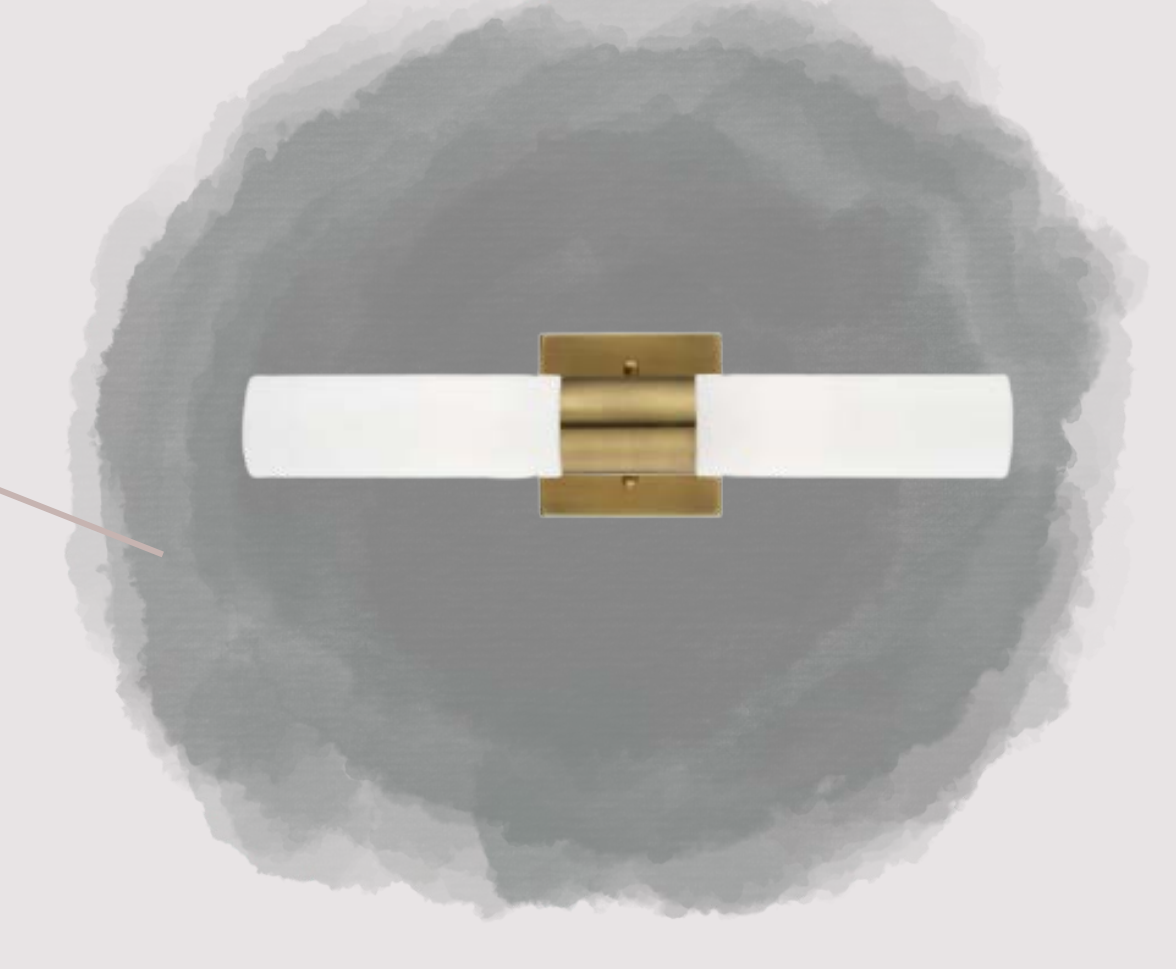
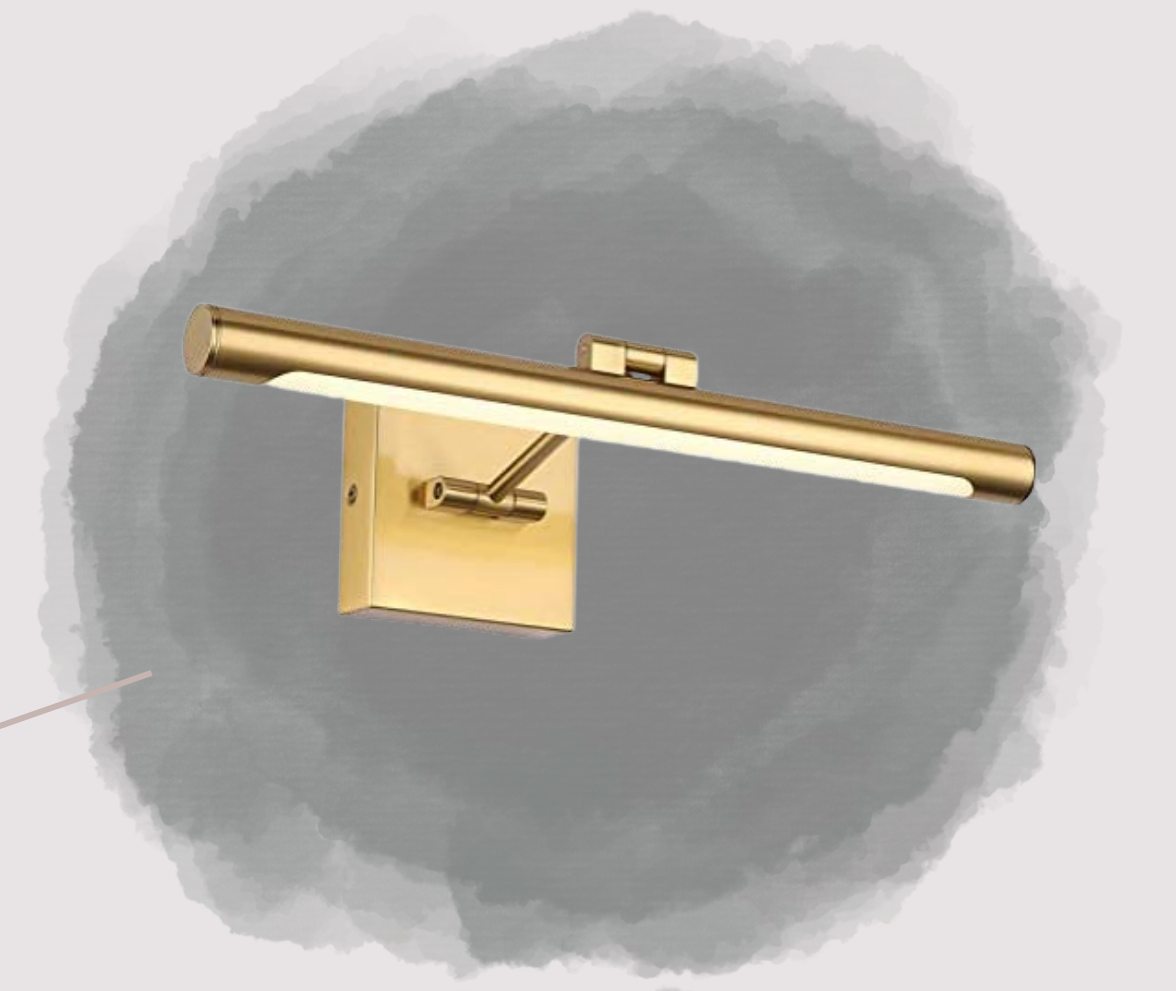
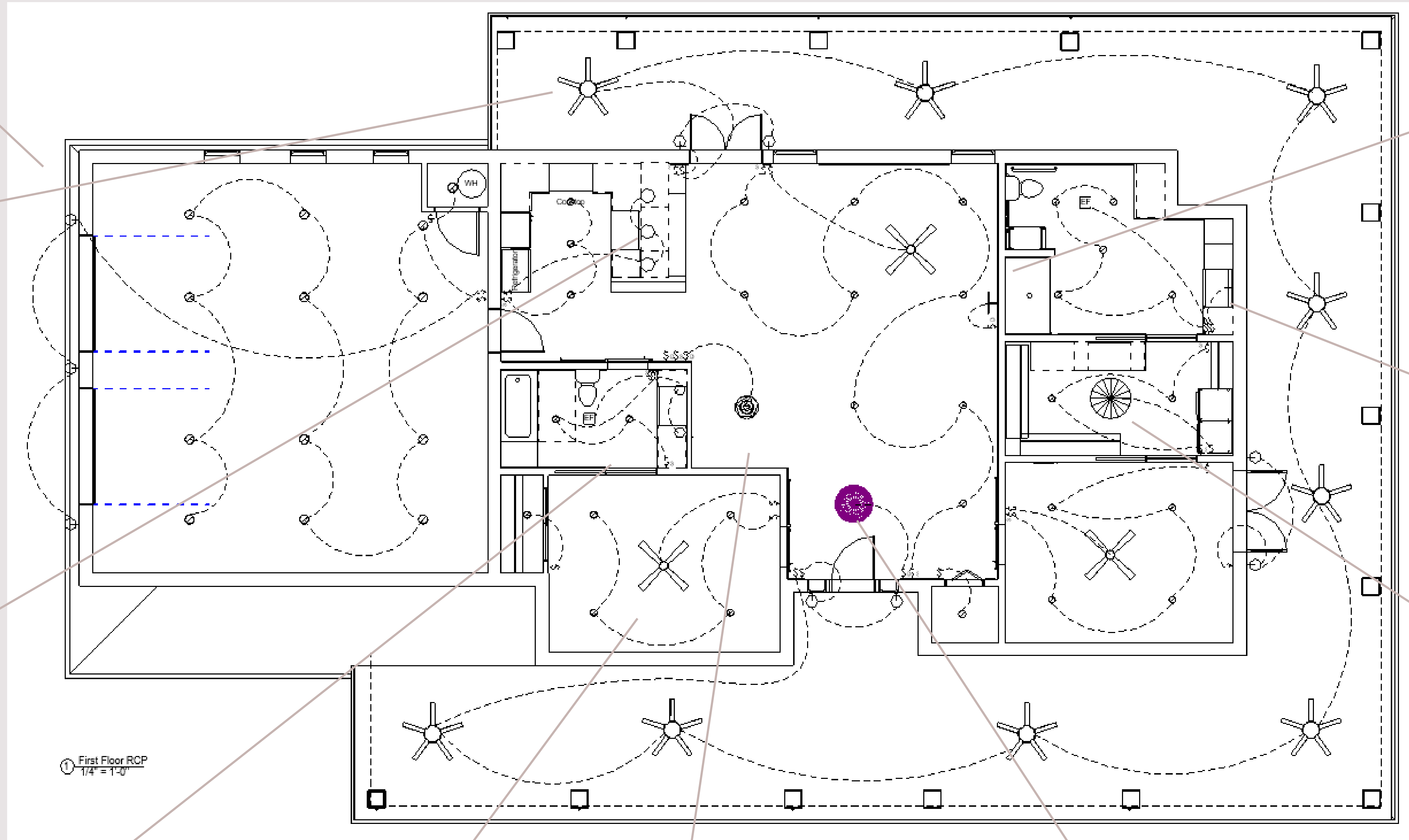
REFLECTED CEILING PLAN

Lighting Legend

	Exterior Ceiling Fan		Exterior Sconce
	Art Display Light		Sconce, Guest Bathroom
	Chandelier, Entry		Interior Ceiling Fan
	Recessed Can Light		Vanity Light
	Chandelier, Dining		Standard Dimmer Switch
	Pendant Fixture, Master Closet		Standard Single-Pole Switch
	Exterior Sconce		Standard Three-Way Switch
	Pendant Light, Island		

Lighting Fixture Schedule

Family and Type	Count
52quot_Surface_Ceiling_Fan_Retro_look_11276: 52quot_Surface_Ceiling_Fan_Retro_look_11276	9
Art Display Light: 700DES18NB-LED930	1
Boho Foyer Light: Boho Foyer Light	1
Downlight - Recessed Can: 6" Incandescent - 120V	46
Downlight - Recessed Can: Fluorescent - 120V	13
Enscape AssetDefinition - Ceiling Lamp 021: Enscape AssetDefinition - Ceiling Lamp 021	1
Enscape AssetDefinition - Pendant Lamp 008: Enscape AssetDefinition - Pendant Lamp 008	1
goose_Neck_Sconce_-_exterior_22976: 100W - 120V	9
Kohler lantern pendant: SNL-Polished Nickel	2
Modern Ceiling Fan: Modern Ceiling Fan	3
Vanity Light: 700BCND24R-LED930	1
Whicker Island Light: 29860/30	3



MATERIALS BOARD & PERSPECTIVES

Master Bedroom



Guest Bedroom



Master Bathroom



Guest Bedroom



MATERIALS BOARD & PERSPECTIVES

Kitchen

- Countertop/Backsplash
- Wall Paint
- Trim/Upper Paint
- Wood Floor



Entry

- Wall Paint
- Trim Paint
- Wood Floor



Living Room

- Carpet
- Trim/Upper Paint
- Wall Paint
- Wood Floor



Dining

- Wall Paper
- Trim Paint
- Wood Floor

