

Golden Hour

JORDAN GARMON | STUDIO IV
SENIOR INDEPENDENT LIVING PROJECT | PART A

Design Statement

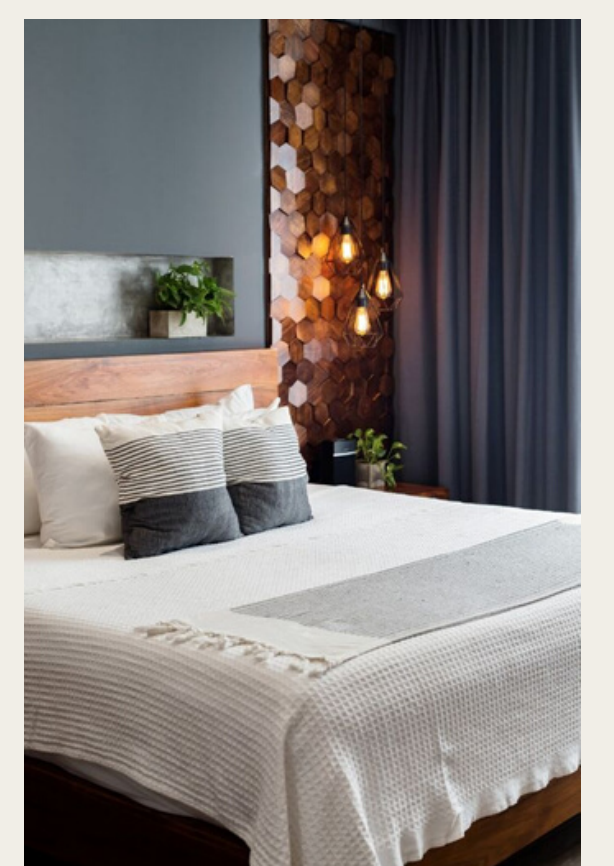
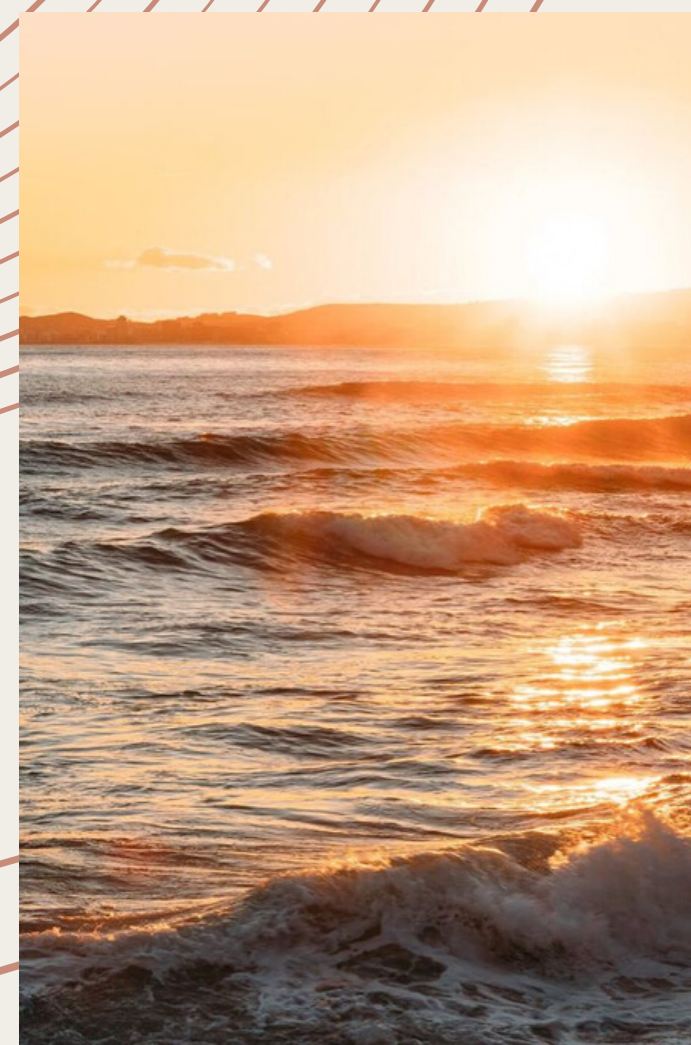
When designing an apartment for the elderly, there are many things to keep in mind, but the main focus of this unit was universal design and biophilic design. More information on these two design features can be found in their own respective sections; they each play a very important part to this design. Another important aspect of this design was the client. This particular client is an elderly couple looking to move into an independent living center. They are happy, healthy, and still very active, and they also love to entertain. Whether it be friends from down the hall or family from miles away, this couple loves to host the people they love and care for. With this in mind, an open concept living, kitchen, and dining area was a no brainer solution that the couple will love. The more this idea was sketched out, the more the solar system kept coming to mind. Pictured to the right is the final process sketch, where the floor plan is centered on the round dining table, just as the planets revolve around the sun. This home at its core is inspired by the sun, and this is reflected all throughout the home. There is nothing more beautiful than golden hour, when the sun is setting and people are settling down with the ones they love most. This design is meant to give this couple that exact feeling every single day in a place where they get to spend the rest of their lives together.

color palette

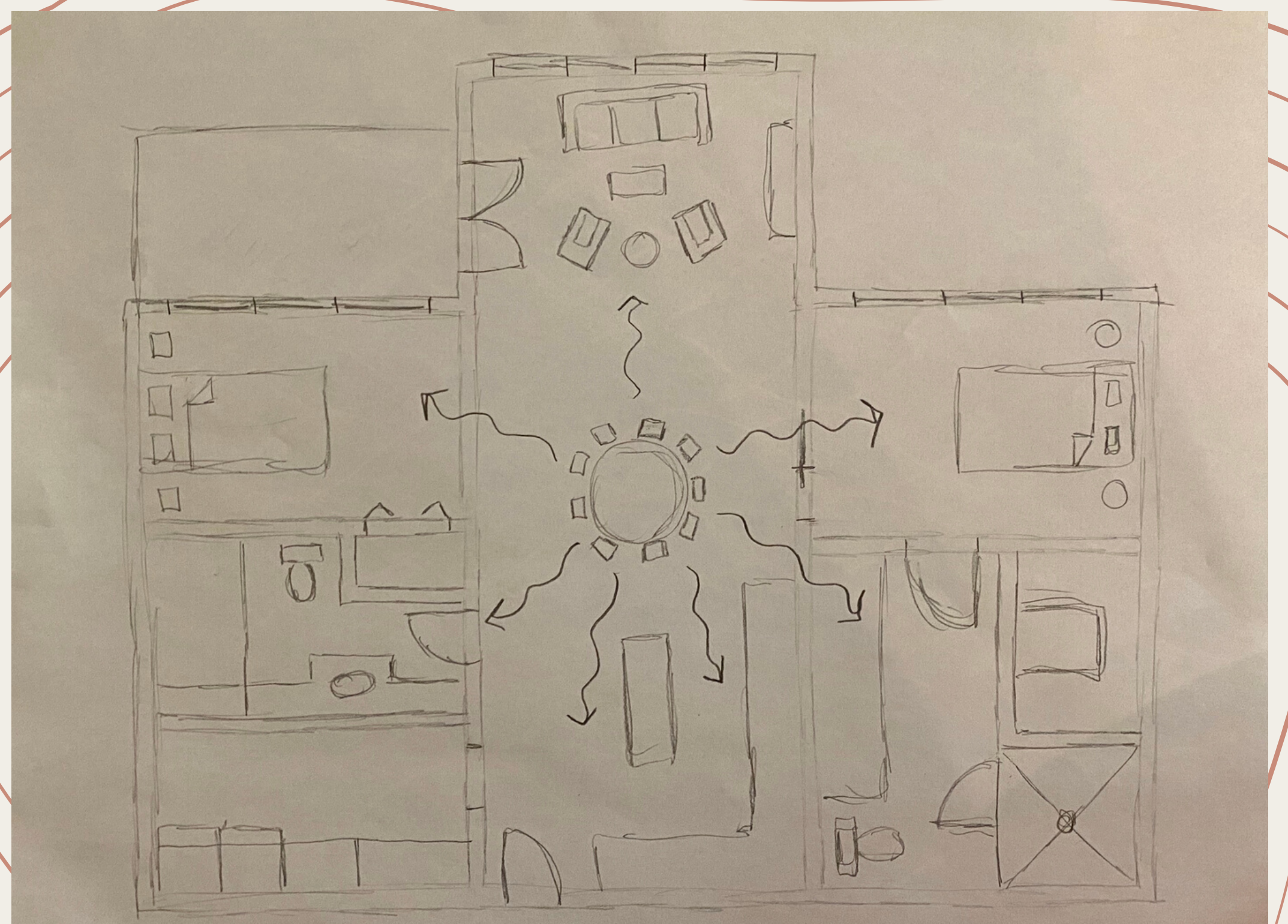


INSPIRED BY THE SUNSET, THIS COLOR PALETTE WAS USED TO EVOKE A WARM FEELING THROUGHOUT THE SPACE.

Inspiration Images



Process Sketch



Golden Hour

JORDAN GARMON | STUDIO IV
SENIOR INDEPENDENT LIVING PROJECT | PART A

Biophilic Design Principles

By incorporating biophilic design principles into this apartment, the couple can see glimpses of nature all throughout their home. Listed below are five chosen principles that are incorporated into the design.

NATURE IN THE SPACE:

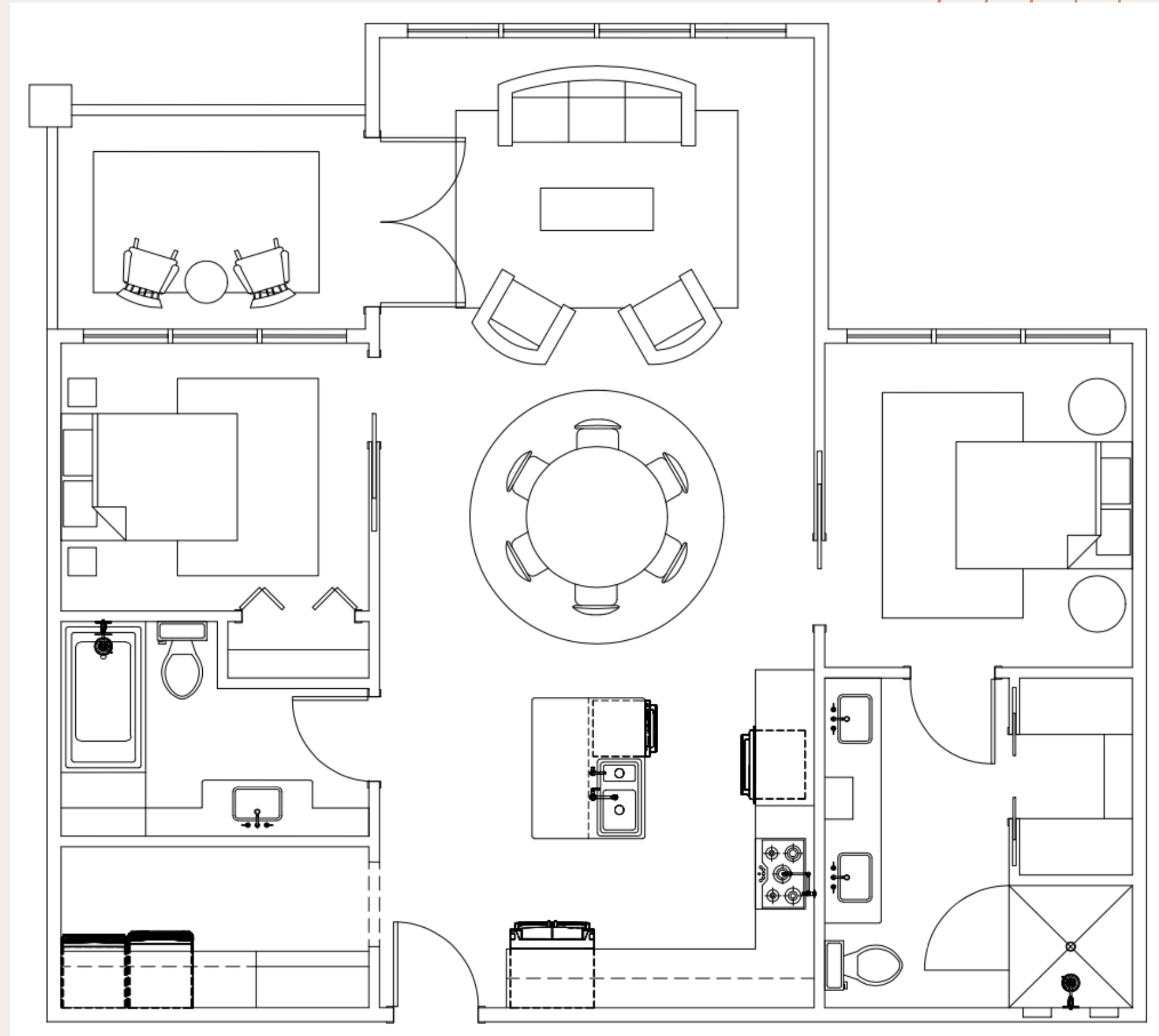
- (1) **Visual Connection with Nature:** A view to elements of nature.
 - Windows cover the back walls of the unit to give the couple an unforgettable view
- (2) **Non-Visual Connection with Nature:** Experiencing nature through other senses
 - In this apartment, the couple can experience nature by adding plants all around the space.
- (3) **Non-Rhythmic Sensory Stimuli:** Short, random connections with nature
 - On top of the windows and plants, the natural materials throughout the space will remind the couple that nature has been incorporated all around them.

NATURAL ANALOGUES:

- (4) **Biomorphic Forms and Patterns:** References to contoured, patterned, textured, or numerical arrangements that are in nature
 - Wood flooring, natural surfaces, and a warm color palette reflecting a sunset remind the couple of the outdoors.

NATURE OF THE SPACE:

- (5) **Refuge:** A place to get away from environmental conditions or main flow of activity
 - This whole apartment is meant to be a space for the couple to get away from the world around them and feel like an escape.



FURNITURE PLAN | NOT TO SCALE

Universal Design Elements

Many features in this apartment were designed with an elderly couple in mind. Since they are still very active, the goal was to ensure if any ADA features needed to be installed, it would be an easy addition with minimal construction. Below is a list of some key universal design features that can be found throughout the home.

- **Doors**
 - All doors are 3'-0"
 - Pocket doors were used as much as possible
- **Kitchen**
 - A two-cook kitchen with 4'-0" walkways between wall cabinets and island
 - Cabinetry under the sink and cooktop can be easily convert into a roll-under countertop
 - Slightly higher base cabinets
 - Pulls on cabinets instead of knobs
- **Bathrooms**
 - Walls have built in support for grab bars to be easily installed
 - Zero-threshold bathroom shower in the master
 - Tub in the guest bathroom includes built in seat
 - Shower heads include detachable handheld shower head
 - Seat in master shower can be installed easily
 - Toilets are ADA compliant

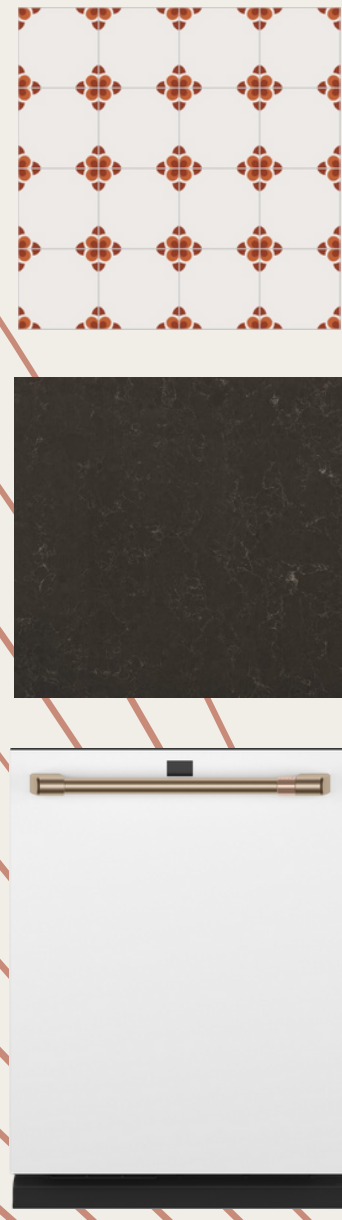


RENDERED FURNITURE PLAN
NOT TO SCALE

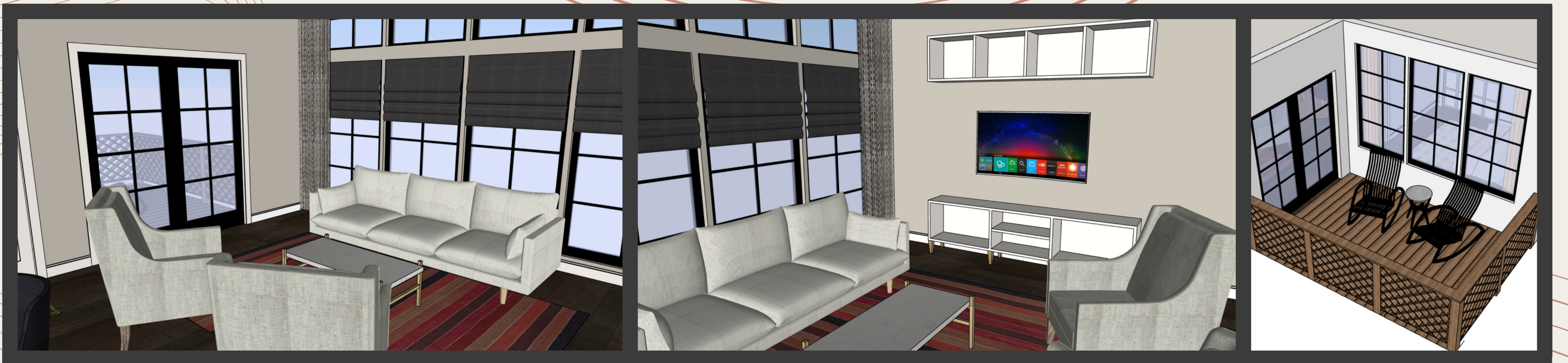


Golden Hour

JORDAN GARMON | STUDIO IV
SENIOR INDEPENDENT LIVING PROJECT | PART A

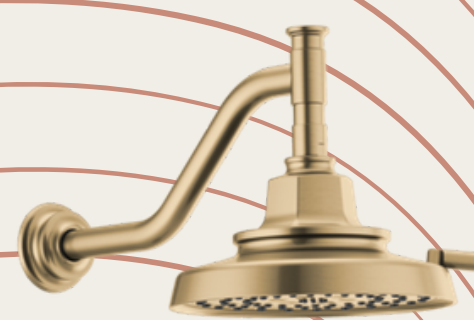


Living Spaces FFE:
Kitchen, Dining, Living, Mudroom, and Balcony



Golden Hour

JORDAN GARMON | STUDIO IV
SENIOR INDEPENDENT LIVING PROJECT | PART A



Master Bedroom and
Bathroom &
Guest Bedroom and
Bathroom
FFE

