

j witzel interior design

Atlanta, GA

(770) 639-5791

julie@jwitzeldesign.com

www.jwitzeldesign.com

Intern: Rachael Persky



I was looking for a bedroom carpet for a client and then a floor lamp, here are pictures from my hunt.

I visited cut flower wholesale to look at their stock for the tablescap. Here I was looking at greenery for the wall installation and for the centerpiece.

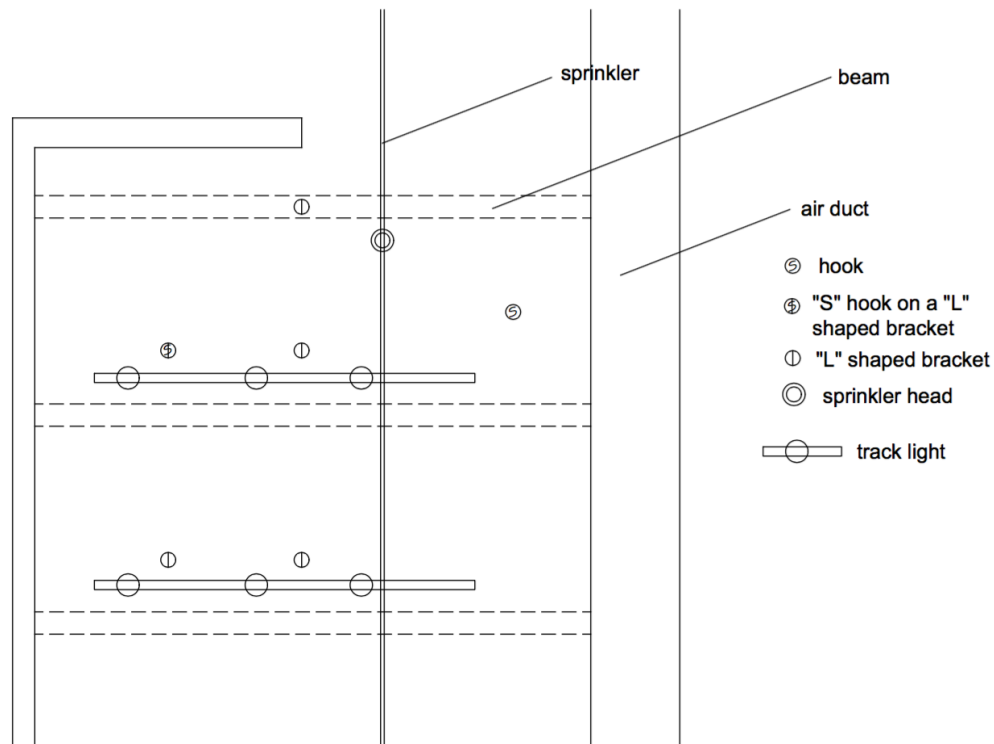




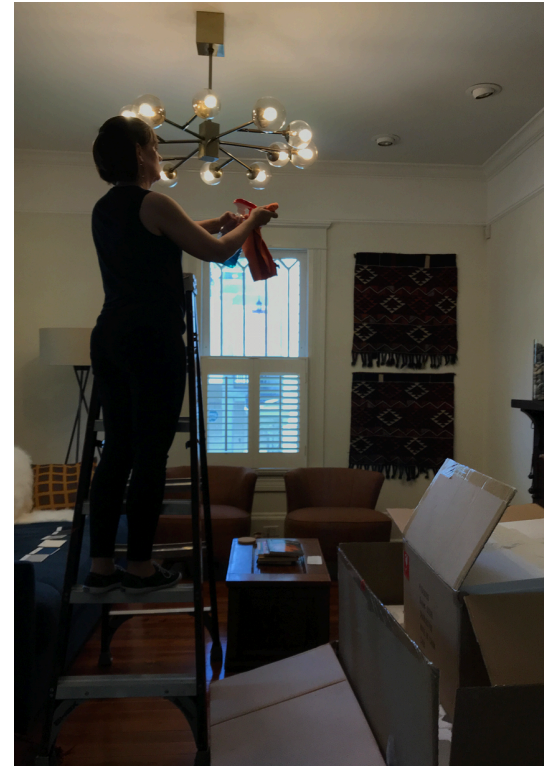
I rendered this centerpiece for the table scape and I attempted to craft it myself but failed, so I went looking for different options with other materials and shapes.

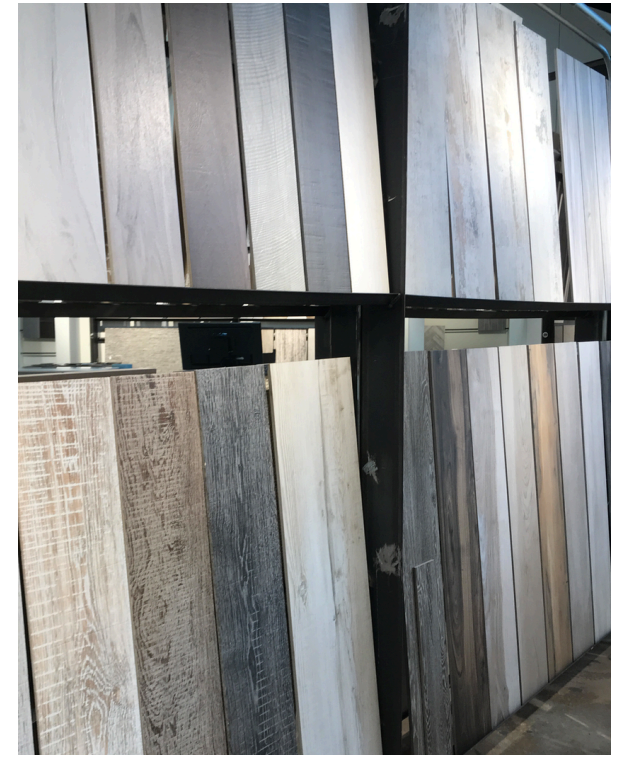
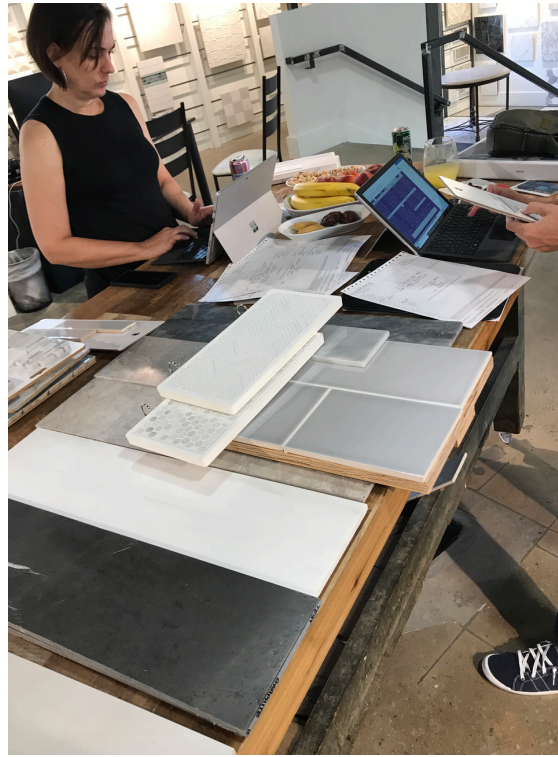


I went to the space where the live and dine event is taking place, and measured the walls, light placement, and outlet placement. I drew a RCP so julie could see where possible places to hang things on existing hooks.



I went to a lighting installation at a clients house. On the day of the install I unpacked the globes and cleaned up the packaging. The light fixture didn't come with bulbs so I had to quickly run to home depot and pick up bulbs before the electricians left so we could use their ladder to place the blulbs and globes. They also installed a light fixture in the dinning roon and above the sink in the kitchen.





I tagged along on a tile selection meeting at Traditions in tile where Julie selected tile for a model unit in one museum place. I learned a lot about different types of tile and mosaic. I need to learn more about tile finishes and use.

Summer Residence and Transportation

I'm still living at home and very thankful that my mom cooks for me and that I commute 10 minutes to work. On the weekends I hang out with friends and relax at home with my dogs.

Some pros of the work I've been doing is that I am lightening the load for my boss. She is very busy and I am picking up smaller tasks that take time away from her job.